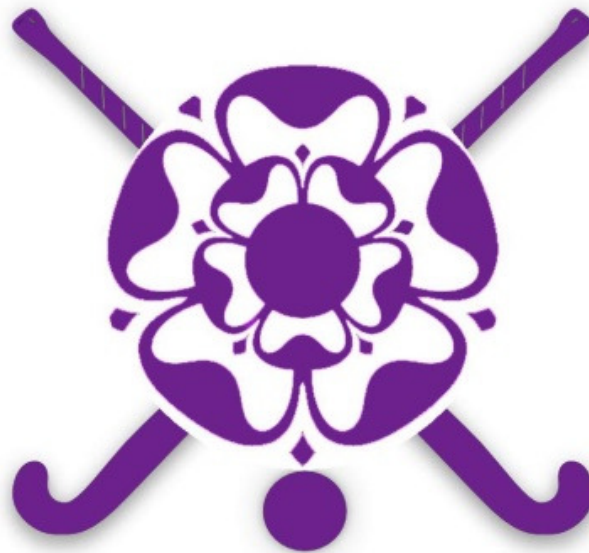


**DERBYSHIRE HOCKEY
ASSOCIATION**

**PLAYER PATHWAY
HANDBOOK**

2019 - 2020

DERBYSHIRE



HOCKEY

PLAYER PATHWAY PROGRAMME

2019 - 2020



DEVELOPMENT CENTRES
Provide fun, enjoyable learning for every player that wants it
Attract new players to the sport and support them joining clubs
Support coach development and develop links with schools and clubs

ENGLAND HOCKEY

ACADEMY CENTRES
Develop a broad and high quality talent base to the pathway
Offer high quality training and competition for development
Provide a platform from which talented players can be identified
Support coach and umpire development

ENGLAND HOCKEY

PERFORMANCE CENTRES
Provide frequent, high quality training with the best coaches supporting our young players
Utilise best v best competition to support player development
Develop an oversupply of exceptional players

ENGLAND HOCKEY

DERBYSHIRE HOCKEY

PLAYER PATHWAY PROGRAMME 2019 - 2020

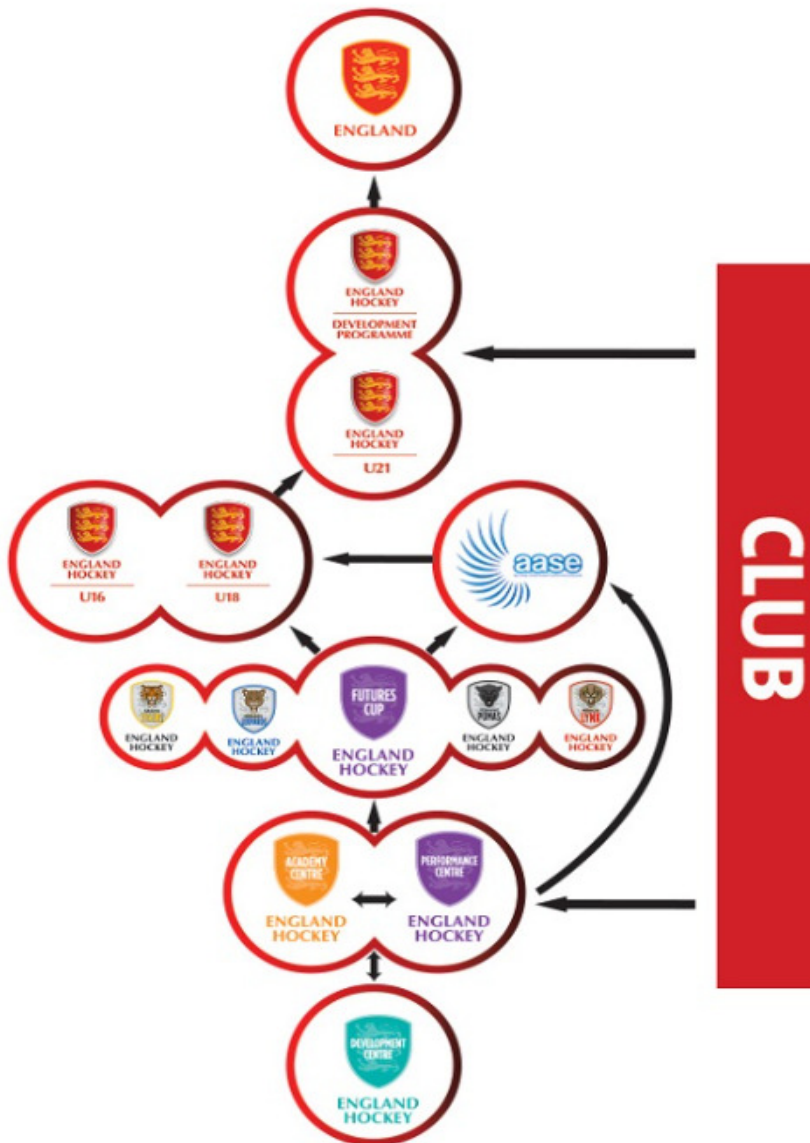
WHAT IS THE PLAYER PATHWAY?

The Player Pathway replaces the 'Single System'. It provides an environment that helps all junior players realise their potential.

The Player Pathway recognises that all players develop at different stages and ages. Placing flexibility within its process to ensure the 'right' player is in the 'right' environment for the majority of their contact time, whatever their level may be.

Once you are in The Player Pathway you will receive coaching opportunities each year relative to your development needs and ability.

It is hoped that by the end you will have developed and enjoyed your Hockey and that it's been tailored to your needs along the way.



The Derbyshire Development Centres are part of England Hockey's Player Pathway and are the hubs of junior hockey development within Derbyshire.

They present fantastic opportunities and are the first step towards reaching the very top. It is the entry point to The Player Pathway and the stepping stone towards further representative hockey opportunities within the Player Pathway.

There will be 3 venues for the Derbyshire Development Centres (DC's) within the county to which all hockey players are invited.

Venue 1. Ellis Astro, Shobnall Leisure Complex – Burton.

Venue 2: Belper Meadows, Belper.

Venue 3: St Marys School - Chesterfield.

Players do not need to be nominated by their school or club to be able to attend. All dates and times are listed further on

The centres will be led by experienced coaches who will coach in accordance with the England Hockey coaching philosophy and deliver their 'National Development Themes' for players.

Players will be assessed and possibly selected for progression through to Derbyshire Academy Centres (AC). Training and fixtures for AC will run from Sept 2019 through to May 2020.

The ACs replace the County teams and will compete with ACs from other Counties. Those players not progressing to ACs will be encouraged to continue with school and club hockey and will be provided with information on local activity until the DC cycle begins again the following season.

IMPORTANT:

Registration for Derbyshire DC must be completed online at:

www.playerpathway.englishockey.co.uk

NB: Registration will be for Derbyshire DC – there will be no requirement to select a specific venue. All players should though aim to attend a minimum of 12 hours of coaching at either one single venue or across different venues – depending on which is most convenient to them in terms of location day/time.




Please note that due to low numbers there will be no DC's held for U16 & U17 Boys and Girls - assessments will be undertaken during AC's. You will still be required to register though so that you are in the system.

Please ensure that you tick the appropriate boxes i.e. Medical, Transportation, Photography etc and then click the **SAVE** button.

Players already registered/already in the system do not need to re-register but **MUST** check their existing registration details and tick the consent boxes when prompted to do so by a system email.

IMPORTANT: At each scheduled training session parents or an assigned responsible adult will need to sign the attending player in and provide emergency contact details and confirm any medical conditions. Failure to do so will result in the player being unable to train.

The infographic is a teal-colored graphic with white text and icons. On the left, it features the England Hockey logo, a group of three stylized figures, and the text '12 - 16 AGES'. On the right, under the heading 'AIMS', there are three columns of text, each with an icon: a lightbulb for 'PROVIDE FUN, ENJOYABLE LEARNING FOR EVERY PLAYER', a hockey stick for 'ATTRACT NEW PLAYERS AND SUPPORT THEM JOINING CLUBS', and a link icon for 'DEVELOP LINKS WITH SCHOOLS AND CLUBS'.

ENGLAND HOCKEY	AIMS	
12 - 16 AGES	 PROVIDE FUN, ENJOYABLE LEARNING FOR EVERY PLAYER	 DEVELOP LINKS WITH SCHOOLS AND CLUBS
	 ATTRACT NEW PLAYERS AND SUPPORT THEM JOINING CLUBS	

DERBYSHIRE DEVELOPMENT CENTRE



VENUE 1 ELLIS



Sunday 21st July	U13 Boys and Girls	09.30 – 11.30	2 hrs
	U14/U15 Boys and Girls	11.30 – 13.30	2 hrs
Saturday 27th July	U13 Boys and Girls	09.30 – 11.30	2 hrs
	U14/U15 Boys and Girls	11.30 – 13.30	2 hrs
Monday 29th July	U13 Boys and Girls	09.30 – 11.30	2 hrs
	U14/U15 Boys and Girls	11.30 – 13.30	2 hrs
Wednesday 31st July	U13 Boys and Girls	17.30 – 19.30	2 hrs
	U14/U15 Boys and Girls	19.30 – 21.30	2 hrs
Thursday 1st Aug	U13 Boys and Girls	17.30 – 19.30	2 hrs
	U14/U15 Boys and Girls	19.30 – 21.30	2 hrs
Saturday 3rd Aug	U13 Boys and Girls	09.30 – 11.30	2 hrs
	U14/U15 Boys and Girls	11.30 – 13.30	2 hrs

COST = £60.00

Payable in advance for all age group sessions.
Full details of how payment can be made are listed further down in the handbook.

DERBYSHIRE DEVELOPMENT CENTRE



VENUE 2 BELPER



Saturday 6th July	U13 Boys and Girls	09.30 – 11.30	2 hrs
	U14/U15 Boys and Girls	11.30 – 13.30	2 hrs
Sunday 7th July	U13 Boys and Girls	09.30 – 11.30	2 hrs
	U14/U15 Boys and Girls	11.30 – 13.30	2 hrs
Sunday 14th July	U13 Boys and Girls	09.30 – 11.30	2 hrs
	U14/U15 Boys and Girls	11.30 – 13.30	2 hrs
Saturday 20th July	U13 Boys and Girls	09.30 – 11.30	2 hrs
	U14/U15 Boys and Girls	11.30 – 13.30	2 hrs
Thursday 25th July	U13 Boys and Girls	17.30 – 19.30	2 hrs
	U14/U15 Boys and Girls	19.30 – 21.30	2 hrs
Sunday 28th July	U13 Boys and Girls	09.30 – 11.30	2 hrs
	U14/U15 Boys and Girls	11.30 – 13.30	2 hrs

COST = £60.00

Payable in advance for all age group sessions.

Full details of how payment can be made are listed further down in the handbook.

DERBYSHIRE DEVELOPMENT CENTRE



VENUE 3 CHESTERFIELD



Saturday 13th July	U13 Boys and Girls	09.30 – 11.30	2 hrs
	U14/U15 Boys and Girls	11.30 – 13.30	2 hrs
Saturday 20th July	U13 Boys and Girls	09.30 – 11.30	2 hrs
	U14/U15 Boys and Girls	11.30 – 13.30	2 hrs
Wednesday 24th July	U13 Boys and Girls	09.30 – 11.30	2 hrs
	U14/U15 Boys and Girls	11.30 – 13.30	2 hrs
Saturday 27th July	U13 Boys and Girls	09.30 – 11.30	2 hrs
	U14/U15 Boys and Girls	11.30 – 13.30	2 hrs
Wednesday 31st July	U13 Boys and Girls	09.30 – 11.30	2 hrs
	U14/U15 Boys and Girls	11.30 – 13.30	2 hrs
Saturday 3rd Aug	U13 Boys and Girls	09.30 – 11.30	2 hrs
	U14/U15 Boys and Girls	11.30 – 13.30	2 hrs

COST = £60.00

Payable in advance for all age group sessions.
Full details of how payment can be made are listed further down in the handbook.



FREQUENTLY ASKED QUESTIONS

Which venue should I attend?

Please attend the venue that is closest or most convenient for you.

Players can attend their age group sessions at more than one venue if they choose – **please remember to sign in and provide all required details at each session at each separate venue.**

Eligibility:

All players that attended DC last cycle.

New players that fall within the age categories below.

Returning Derbyshire Academy Players.

Age Categories: U13: Born 2007, 2008 or 2009; U14: Born 2006; U15: Born 2005

What does it Cost?: £60.00 for all age groups

Attendees will be required to pay for 12 hours of scheduled age group coaching time in advance, irrespective of the numbers of hours'/sessions they actually elect to attend.

Preferred method of payment is a bank transfer

Account Details: Sort Code: 40-15-20; Account Number: 52046415

Please ensure that you make it clear which venue/player/age group you are making payment for **e.g. Ellis DC U15B M. Abel; Belper DC U15G E. Abel.**

As players can choose to attend multiple venues please indicate the venue which will be the preferred one for the majority of your sessions.

Alternatively, payment can be made by cash or cheque – payable to **Derbyshire Hockey Association** c/o Ian Whetton, DHA Treasurer, 83 Mill Hill Lane, Winshill, Burton-on-Trent, DE15 0BA

Please include details on the back of the cheque as above for centre/player/age group.



FREQUENTLY ASKED QUESTIONS - CONTINUED

What do I need to bring with me?

You will need a hockey stick, shin pads, a gum shield, food and a drink.

Remember to put in a waterproof and change of clothes if it looks like rain or sun block if it is going to be a sunny day!

DC Assessment?

There will be no formal written or online assessments for DC activity.

Coaches will provide continual feedback during the sessions - both individually to players as well as to groups.

Progression to Derbyshire Academy Centres will take place at the end of the DC cycle.

Players will be notified in August 2019.

ACADEMY CENTRES



PROVISIONAL TRAINING DATES 2019 - 2020

Please find below the provisional dates for the Derbyshire Academy Centre training (ACs). These will be held at The Ellis Astro, Shobnall and Belper Meadows, Belper. The aim of AC's is to offer high quality training and competition providing a platform from which to identify talented players. Each age group will have a 1.5hr session on each date.

DATE	AGE GROUP	TIME	SESSION LENGTH	COST
Sunday 8 th Sept 2019	U13 – U17 Boys and Girls	11.00 – 17.00	1.5 hrs per age group	£54 Payable in advance for all 6 sessions
Sunday 15 th Sept 2019	U13 – U17 Boys and Girls	11.00 – 17.00	1.5 hrs per age group	
Sunday 22 nd Sept 2019	U13 – U17 Boys and Girls	11.00 – 17.00	1.5 hrs per age group	
Sunday 6 th Oct 2019	U13 – U17 Boys and Girls	11.00 – 17.00	1.5 hrs per age group	
Sunday 20 th Oct 2019	U13 – U17 Boys and Girls	11.00 – 17.00	1.5 hrs per age group	
Sunday 24 th Nov 2019	U13 – U17 Boys and Girls	11.00 – 17.00	1.5 hrs per age group	

Please note that the minimum required attendance to be considered for the AC squad is 4 full sessions of 1.5 hours and that we cannot offer a refund for non-availability/attendance. We operate a policy of continual assessment and in order to make the most of the coaching, players should attend all 6 sessions. Final details/times will be confirmed/published along with the finalised AC fixture dates nearer the time.

ERROR: stackunderflow
OFFENDING COMMAND: ~

STACK: